

IPPF 2021

Annual Consultative Meeting

Donors & Partners

VOLUNTEER



www.pkbi.or.id

HUMANITARIAN PROGRAM

Our Humanitarian Program exists to help every woman and girl access sexual and reproductive healthcare in emergencies. In every single region we operate in, we help women and girls stay safe, healthy, and thrive.

Since June 2020, the IPPF Humanitarian Team has provided technical support to Member Associations to deliver life-saving care in crises such as the volcanic explosion in St Vincent, the refugee influx into Sudan from the Tigray crisis in Ethiopia, Tropical Cyclone Yasa in Fiji, and the explosion in Beirut, all during the COVID-19 pandemic.

We lead the way on tackling big problems like access to safe abortion care and contraception, STI and HIV testing and response, and GBV support and referrals. We ensure pregnant women have access to prenatal care and safe deliveries. We know we can't do this alone. Together with donors, partners and supporters, we work to help women and girls attain their reproductive freedom.

IPPF's Member Associations reached 5.5 million people in fragile and humanitarian settings in 2020.



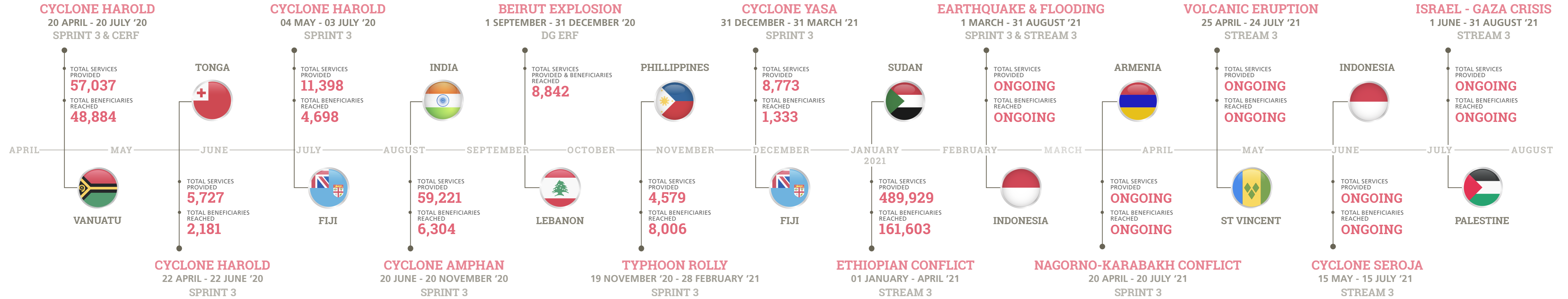
OUR IMPACT IN 2020



**WE'RE WORKING
ALL OVER
THE WORLD**

HUMANITARIAN RESPONSES

2020-2021



COVID-19 RESPONSES

2020-2021





SPRINT RESPONSE: CYCLONE HAROLD

This response reached 4,698 total beneficiaries. 100% of GBV survivors seeking care received first-line support.

Tropical Cyclone Harold made landfall as a Category 5 cyclone on 6 April 2020, hitting Fiji, Tonga and Vanuatu. TC Harold occurred during the COVID-19 pandemic, which meant all three countries were experiencing government mandated states of emergencies, and with this, challenges in stock acquisition, information gathering and movement to disaster sites.

IPPF's Member Associations in the three affected countries, the Reproductive and Family Health Association of Fiji (RFHAF), the Tonga Family Health Association (TFHA), and the Vanuatu Family Health Association (VFHA) were provided support by the Australian Government to be able to provide life-saving SRH care in the hardest hit communities.



STREAM 3 RESPONSE: SUDAN CRISIS

In total, 161,603 clients were reached with 489,929 services.

In November 2020, armed clashes were reported between the Ethiopian Defense Forces and the Tigray Regional Security forces in Tigray region, Ethiopia. The Ethiopian government declared a state of emergency, with a total of 1.5 to 2 million people affected.

IPPF's Member Association in Sudan, the Sudan Family Planning Association (SFPA) focused its response on two states - Gedarf and Kassala. SFPA provided an integrated package of essential sexual and reproductive health services: antenatal and post-natal care, gynecological services, abortion related services, STIs and HIV services, pediatrics, SRH specialised counseling, urology, and the clinical management of rape, in addition to primary health care. This was achieved through three static clinics, two mobile clinics and four outreach mobile medical teams.

Leading through Localisation: MA to MA Sharing

The new IPPF Business Plan involves mainstreaming humanitarian programming and laying the groundwork for enhanced peer-to-peer support. This new way of working leverages existing humanitarian experience and skills of Member Associations and equips them to elevate humanitarian capacity across the Federation.

Objectives & Achievements

- Established MA-led Humanitarian Capacity Development Centres in Pakistan and Uganda
- Six priority MAs identified for tailored capacity development and work-planning commenced
- Provided technical assistance and guidance on adapting and implementing GBV mitigation and response activities highlighting survivor-centered approaches, first-line support and functional referral mechanisms.
- Developed supply chain guidance for MAs in humanitarian crises.

Priorities identified for coming phase

- FPAP and RHU are supporting key MAs to further develop skills essential to emergency preparedness, policy improvement, humanitarian response and up-skilling around implementation of the Minimum Initial Service Package (MISP) in crises.
- Integrated technical assistance approach, including contingency planning for operating during the COVID-19 pandemic.

Focus countries that will receive capacity building include key MAs operating in protracted crises: **Sudan, Yemen, Maldives, Central African Republic, Burundi and Burkina Faso.**

COVID-19

IN HUMANITARIAN SETTINGS

OUR GLOBAL RESPONSE

Member Associations in fragile and humanitarian settings were struggling to ensure continuity of SRH services during the crisis; this was due to a decrease in the number of operational service delivery points, staff having to work remotely, stock shortages and disruption to supply chains.

The IPPF Humanitarian Team worked with technical colleagues from within the IPPF Secretariat to develop and share guidance on COVID-19 preparedness and response. This included rational use of personal protective equipment, how MAs can work within their populations and existing service delivery points to reduce exposure to the virus, how to participate in early warning systems, and build local awareness and capacity to cope.

Through our **SPRINT COVID-19 responses**, we were able to ensure **673,598 people** could continue to receive safe, quality SRH care from our Member Associations from June 2020 to now. Globally, **59 MAs** were supported by IPPF for additional resources to cope with COVID-19.